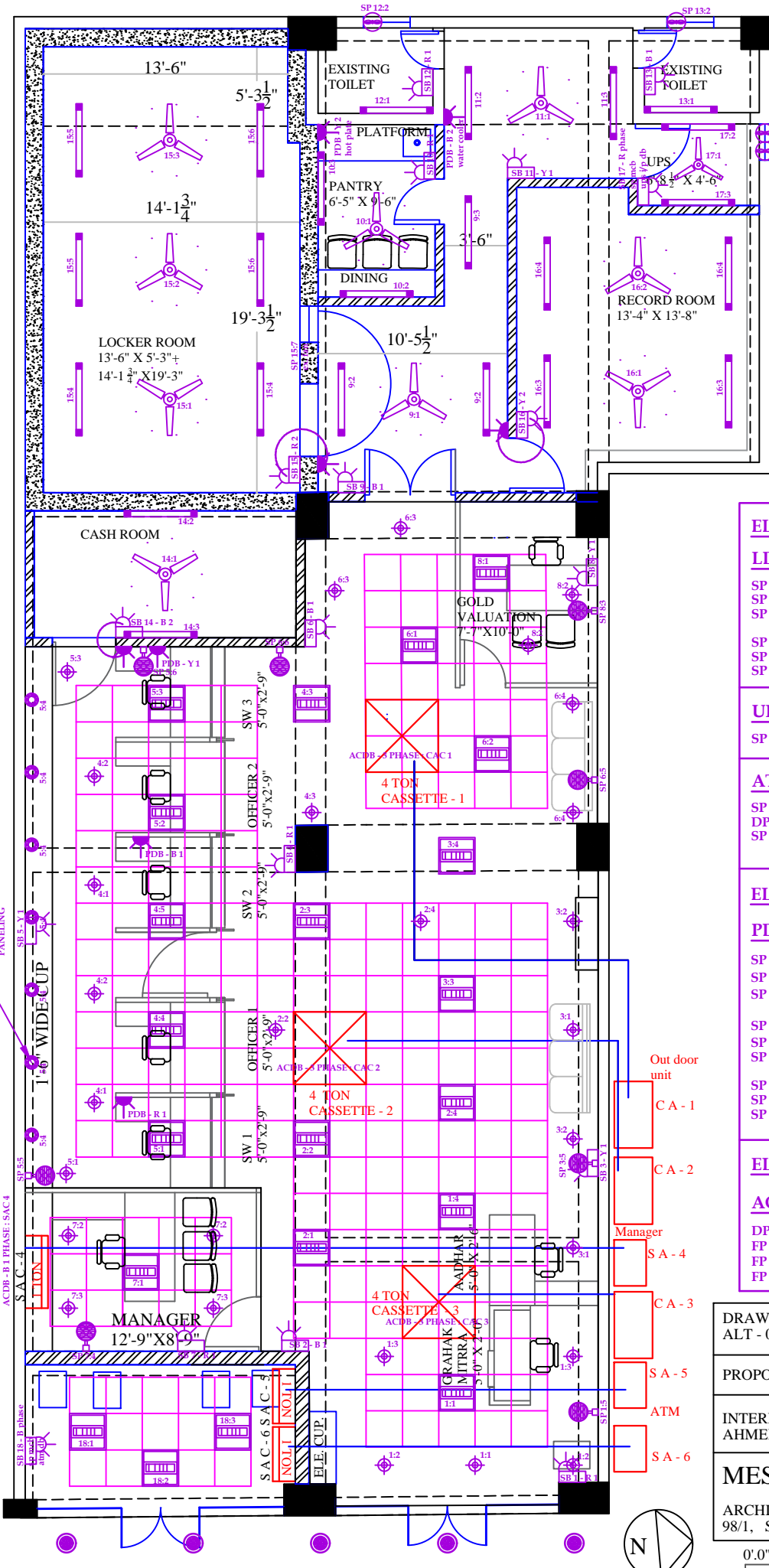


BANKING HALL AREA - 1362.00 SQ FEET
4 TON CASSETTE AC NOS - 12 TON

MANAGER CHAMBER - 112.00 SQ FEET
1 TON SPLIT AC - 1 TON

ATM - 104.00 SQ FEET
1 TON SPLIT AC 2 NOS. - 2 TON



FOR SPLIT AC IN E LOBBY ::
DP RCCB TO BE FIXED NEAR ATM DB
AFTER AC TIMER & FROM DP RCCB TO
SPLIT AC UNITS - USE 4.0 sq mm CIRCUIT MAINS
AS PER TENDER - COUNTING FOR AC POINT.

IN UPS ROOM :: SP SWITCH TO TIMER
THEN 2 NOS SP SWITCH
FOR EX. FANS

ELE. PANEL

LDB SECTION :

SP MCB : R 1 PHASE : SB 1 / SB 4 / SB 7 / SB 10 / SB 12.
SP MCB : Y 1 PHASE : SB 3 / SB 5 / SB 8 / SB 11.
SP MCB : B 1 PHASE : SB 2 / SB 6 / SB 9 / SB 13.

SP MCB : R 2 PHASE : SB 15.
SP MCB : Y 2 PHASE : SB 16.
SP MCB : B 2 PHASE : SB 14.

UPS I/P DB SECTION :

SP MCB : R PHASE : SB 17.

ATMDB SECTION :

SP MCB : B PHASE : SB 18.
DP MCB : Y PHASE : AC TIMER - SAC 5 / SAC 6.
SP MCB : R PHASE : raw power pts - R 11.

ELE. PANEL

PDB SECTION :

SP MCB : R 1 PHASE : $\frac{6}{16}$ A power pt. - note counting m/c. - swo 1 table.
SP MCB : Y 1 PHASE : $\frac{6}{16}$ A power pt. - note counting m/c. - swo 3 table.
SP MCB : B 1 PHASE : $\frac{6}{16}$ A power pt. - note counting m/c. - swo 2 table.

SP MCB : B 2 PHASE : $\frac{6}{16}$ A power pt. - water cooler - pantry.
SP MCB : Y 2 PHASE : $\frac{6}{16}$ A power pt. - hot plate - pantry.
SP MCB : R 2 PHASE : raw power pts - R 1 / R 2.

SP MCB : R 3 PHASE : raw power pts - R 3 / R 4 / R 5.
SP MCB : Y 3 PHASE : raw power pts - R 6 / R 7 / R 8.
SP MCB : Y 3 PHASE : raw power pts - R 9 / R 10.

ELE. DB PANEL

ACDB SECTION :

DP MCB : B 1 PHASE : SAC 4 - BM CABIN.
FP RCCB : Y 3 PHASE AC : CAC 1 - HALL AREA.
FP RCCB : 3 PHASE AC : CAC 2 - HALL AREA.
FP RCCB : 3 PHASE AC : CAC 3 - HALL AREA.

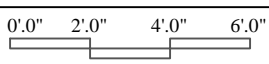
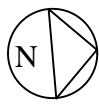
DRAWING NO. ALT - 05/WD-07	DATE 01-01-2026	DRAWN BY SAJEDA	CHECKED BY V. V. T.
-------------------------------	--------------------	--------------------	------------------------

PROPOSED ELECTRICAL / AIR CONDITION LAYOUT







INTERIOR DESIGNING WORK FOR SBI (GOTA BRANCH), AHMEDABAD.

MESSRS VIRAT V. THAKORE

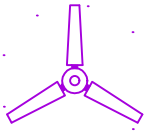


ARCHITECTS, URBAN DESIGNERS & VALUERS,
98/1, SAMASTA SOCIETY, AHMEDABAD - 380 007.



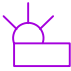







LEGEND-LIGHTS

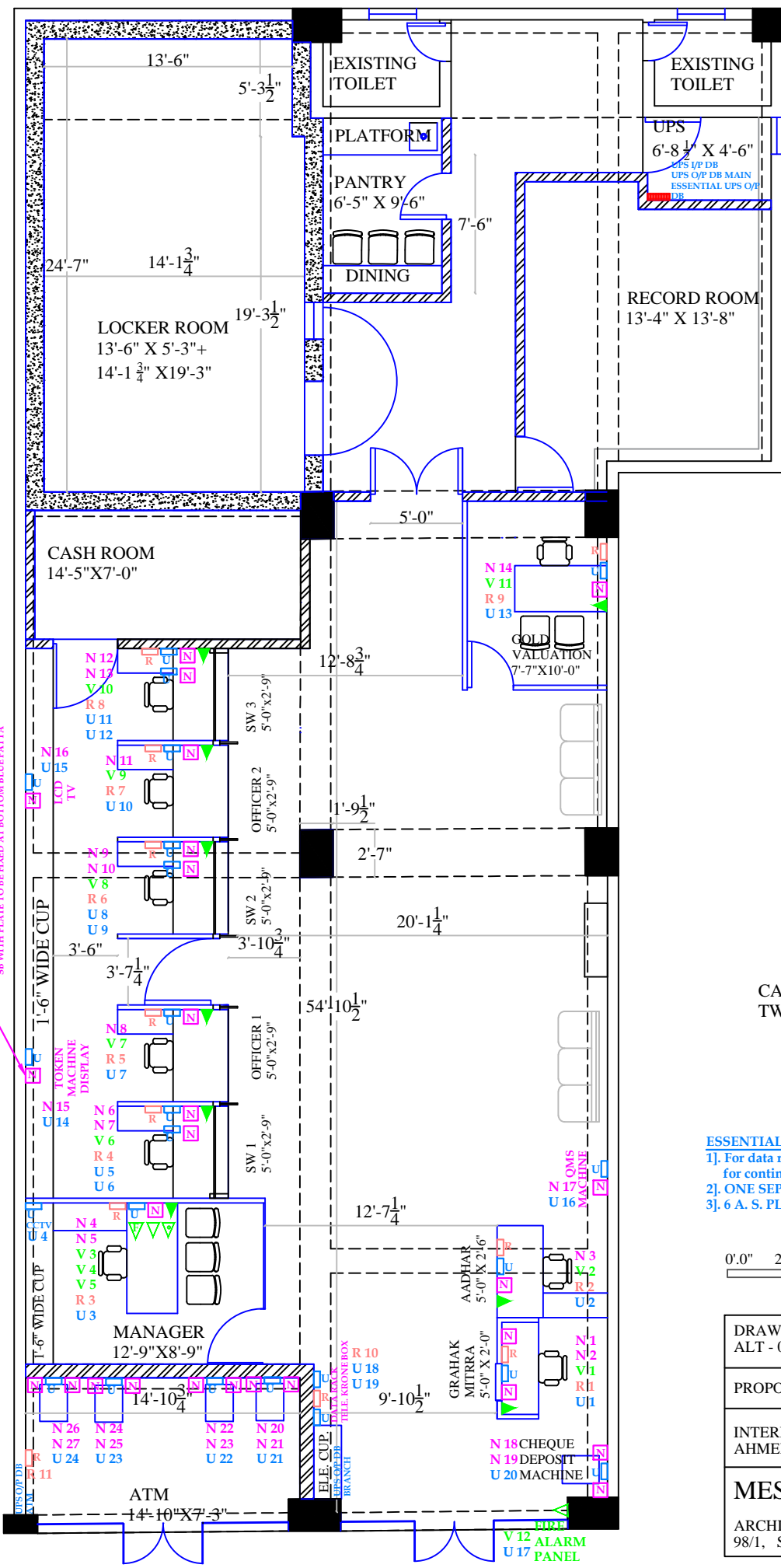
	1 X 36 W LED RECESS MOUNTED TUBE LIGHT (2' X 2').
	1 X 12W LED DOWNLIGHTER LIGHT POINT / FIXTURE.
	1 X 20 W LED BATTEN TUBE LIGHT - 4' FEET
	1 X 10 W LED BATTEN TUBE LIGHT - 1' FEET
	1 X 3 W LED ROUND SMALL LIGHT POINT / FIXTURE.
	DECORATIVE 1 X 6 W LED ROUND EYE BALL LIGHT POINT / FIXTURE.
	DECORATIVE HANGING LIGHT POINT / FIXTURE.

LEGEND-FANS

	FAN POINT (1200 MM SWEEP).
	WALL FAN.
	EXHAUST FAN.

LEGEND-SB/DB/PANEL

	SWITCH BOARD WITH 6 A PLUG POINT.
	6 A SOCKET ONLY .
	6 A SWITCH + 6 A SOCKET - SEPARATE PLUG POINT .
	20 A / 25 A. DP MCB WITH METAL ENCLOSURE FOR A.C. POINT.
	6 / 16 A SOCKET WITH SWITCH POINT.
	WALL FAN PLUG POINT.
	D B / ELE. PANEL.
	SPEAKER POINT.



FOR DIGITAL WALL: SOCKETS WITH PLATE TO BE FIXED AT 6" BOTTOM OF TOP BLUE PAINT. SB WITH PLATE TO BE FIXED AT BOTTOM BLUE PAINT.

LEGEND - FLOOR JUNCTION	
	300 X 300 X 40 mm FLOOR JUNCTION BOX.
	150 X 150 X 40 mm FLOOR JUNCTION BOX.
	UPS / RAW POWER - PIPE LINE.
	DATA / TELE - PIPE LINE.
	20 / 25 mm DIA. PIPE BEND.

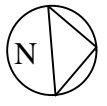
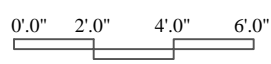
LEGEND - BACKUP POWER	
	2 NOS. 6 A. SOCKET WITH ONE NO. 6 A. SWITCH.
	2 NOS. 6 A. SOCKET + ONE NO. 16 A. SOCKET WITH ONE NO. 16 AMP. SWITCH WITH INDICATOR.
	UPS DB - I/P DB & O/P DB.

LEGEND - NETWORK	
	COMPUTER DATA I/O NODE.
	INTERCOM TELE. RJ 11 JACK POINT.
	DIRECT TELE. RJ 11 JACK POINT.
	IP TELE. RJ 45 JACK POINT.
	FAX TELE. RJ 11 JACK POINT.

N - SYMBOL FOR DATA I/O POINT.
 V - SYMBOL FOR TELE. I/O POINT.
 R - SYMBOL FOR RAW POWER POINT.
 U - SYMBOL FOR UPS POWER POINT.

CARPET AREA WITHOUT TWO TOILETS - 2674.80 SQ FEET

- ESSENTIAL DB : FOLLOWING POINTS TO BE CONSIDERED.**
- For data rack - two ups points should be laid from diff. ups units for continuous power supply of data rack.
 - ONE SEPARATE UPS CIRCUIT SHOULD BE LAID IN CM CABIN FOR CCTV
 - 6 A. S. PLUG UPS SUPPLY FOR FIRE ALARM SYSTEM & ONE TELE. POINT.



DRAWING NO. ALT - 05/WD-08	DATE 29-12-2025	DRAWN BY SAJEDA	CHECKED BY V. V. T.
-------------------------------	--------------------	--------------------	------------------------

PROPOSED FURNITURE PLAN - NETWORK LAYOUT

INTERIOR DESIGNING WORK FOR SBI (GOTA BRANCH), AHMEDABAD.

MESSRS VIRAT V. THAKORE

ARCHITECTS, URBAN DESIGNERS & VALUERS,
 98/1, SAMASTA SOCIETY, AHMEDABAD - 380 007.

SCHEDULE - NETWORK POINTS FOR STATE BANK OF INDIA, GOTA BRANCH, AHMEDABAD, AAO.

S.B. No.	Location of S.B.	UPS	UPS	UPS NO. ferruls	RPP	RAW POWER NO. ferruls	RJ-45	IP TELE.	I/O NO. ferruls	INTERCOM TELE.	FAX TELE.	DIRECT TELE.	INTERCOM TELE. Ferruls	1 MTR. PATCH CORD	2 MTR. PATCH CORD
		BOQ A - 1.4	BOQ C - 5		BOQ C - 6		BOQ C - 8	BOQ C - 9		BOQ C - 13	BOQ C - 13	BOQ C - 13		BOQ C - 11	BOQ C - 12
1	GRAHKA MITRA TABLE.		1	U 1	1	R 1	2		N 1, N 2	1			V 1	2	1
2	AADHAR TABLE.		1	U 2	1	R 2	1		N 3	1			V 2	1	1
3	BM CABIN.		1	U 3	1	R 3	1	1	N 4, N 5	1	1	1	V 3, V 4, V 5	2	1
4	B M CABIN CCTV.		1	U 4											
5	SWO 1.		2	U 5, U 6	1	R 4	2		N 6, N 7	1			V 6	2	1
6	OFFICER 1.		1	U 7	1	R 5	1		N 8	1			V 8	1	1
7	SWO 2.		2	U 8, U 9	1	R 6	2		N 9, N 10	1			V 7	2	1
8	OFFICER 2.		1	U 10	1	R 7	1		N 11	1			V 8	1	1
9	SWO 3.		2	U 11, U 12	1	R 8	2		N 12, N 13	1			V 9	2	1
10	OFF - GOLD VALUATION CABIN.		1	U 13	1	R 9	1		N 14	1			V 10	1	1
11	LCD TV.		1	U 14			1		N 15					1	1
12	TOKEN MACHINE DISPLAY.		1	U 15			1		N 16					1	1
13	QMS MACHINE.		1	U 16			1		N 17					1	1
14	FIRE ALARM PANEL.		1	U 17								1	V 12		
15	DATA RACK.		2	U 18, U 19	1	R 10									
16	PASSBOOK PRINTER.		1	U 20			2		N 18, N 19					2	1
17	ATM 1.		1	U 21	1	R 11	2		N 20, N 21					2	1
18	ATM 2.		1	U 22			2		N 22, N 23					2	1
19	ATM 3.		1	U 23			2		N 24, N 25					2	1
20	PASSBOOK PRINTER.		1	U 24			2		N 26, N 27					2	1
TOTAL		0	24		11		26	1		9	1	2		27	17

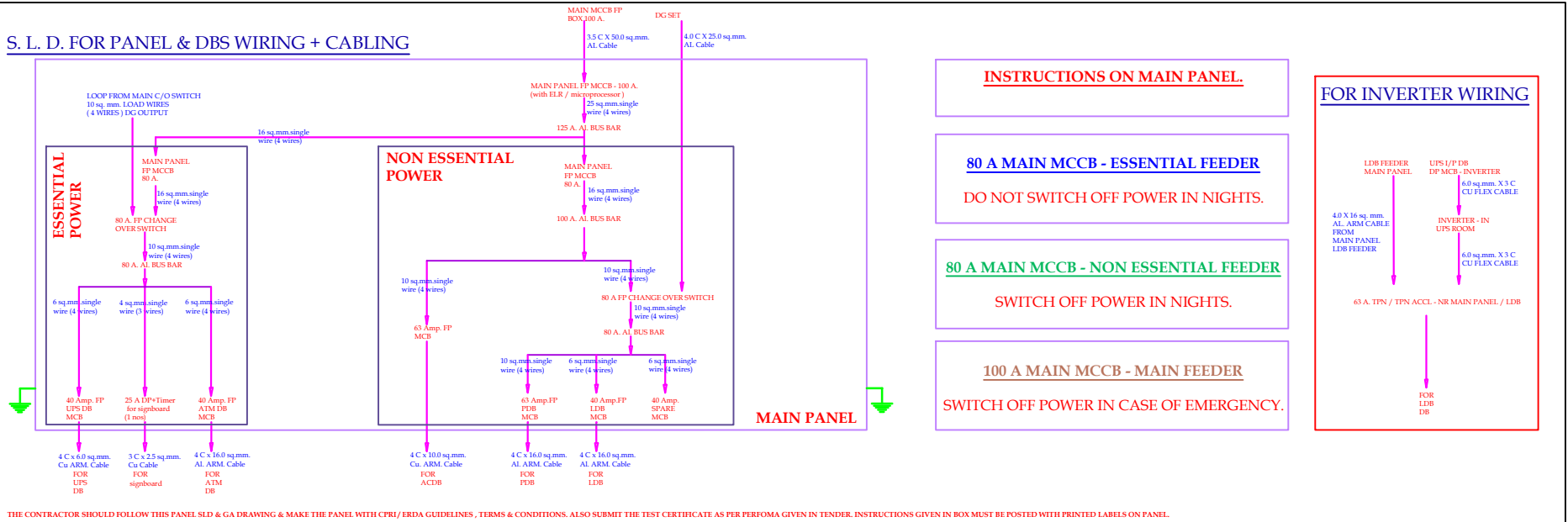
**SCHEDULE - CABLE MEASUREMENT SHEET FOR STATE BANK OF INDIA, GOTA
BRANCH, AHMEDABAD, AAO.**

SR. No.	MAIN PANEL	CABLE MEASUREMENT										EARTHING DETAILS			
		3 C X 2.5 sq. mm. Cu. CABLE	4 C X 4.0 sq. mm. Cu. CABLE	4 C X 6.0 sq. mm. Cu. CABLE	4 C X 10.0 sq. mm. Cu. CABLE	4 C X 16.0 sq. mm. Al. CABLE	3.5 C X 50.0 sq. mm. Al. CABLE	4.0 C X 25.0 sq. mm. Al. CABLE	25 sq. mm. LOAD WIRES	3 C X 6.0 sq. mm. Cu. CABLE	3 C X 4.0 sq. mm. Cu. CABLE	4.0 sq. mm. Cu. Flexible wire	16.0 sq. mm. Cu. Flexible wire		
		MTRS.	MTRS.	MTRS.	MTRS.	MTRS.	MTRS.	MTRS.	MTRS.	MTRS.	MTRS.	MTRS.	MTRS.	MTRS.	
	BOQ ITEM NO.	BOQ F 21.1	BOQ F 21.2	BOQ F 21.3	BOQ F 21.4	BOQ F 21.5	BOQ F 21.6	BOQ F 21.7	BOQ F 21.8	BOQ F 21.10	BOQ F 21.11	BOQ E 20.2	BOQ E 20.1		

1	MCCB.								6			40			
2	MAIN PANEL.						40						20		
3	DG SET.														
4	SIGN BOARD.	20													
5	UPS I/P DB.			30									20		
6	LDB.					4						4			
7	PDB.					4						4			
8	ACDB.				4							4			
9	3 PHASE CASSETTE AC OUTDOOR UNIT FP MCB OUTDOOR TO ACDB. CAC 3.		12									12			
10	3 PHASE CASSETTE AC OUTDOOR UNIT FP MCB OUTDOOR TO ACDB. CAC 2.		15									10			
11	3 PHASE CASSETTE AC OUTDOOR UNIT FP MCB OUTDOOR TO ACDB. CAC 1.		20									20			
12	ATM DB.					10						10			
13	UPS TO UPS I/P DB.									3					
14	UPS TO UPS O/P DB IN UPS ROOM.									3					
15	UPS O/P DB in UPS ROOM TO UPS O/P DB - BRANCH .									30					
16	UPS O/P DB TO UPS O/P DB ESSENTIAL DB.										3				
17	UPS I/P DB TO INVERTER.									3					
18	INVERTER TO FP MCB CHANGEVER NEAR PANEL.									30					
19	ATM DP MCB in UPS ROOM TO UPS unit.										3				
20	ATM DP MCB in UPS ROOM TO ATM UPS O/P DB.										30				
	TOTAL .	20	47	30	4	18	40	0	6	69	36	104	40	0	0

21	DATA CAT - 2 WIRES FROM DATA RACK TO KRONE BOX - BOQ NO . C - 7														MTRS.
----	---	--	--	--	--	--	--	--	--	--	--	--	--	--	--------------

S. L. D. FOR PANEL & DBS WIRING + CABLING

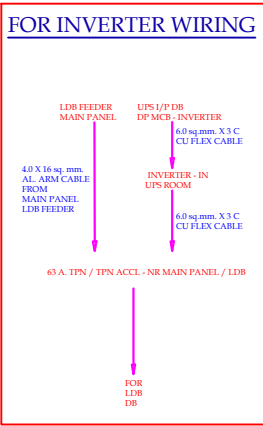


INSTRUCTIONS ON MAIN PANEL.

80 A MAIN MCCB - ESSENTIAL FEEDER
DO NOT SWITCH OFF POWER IN NIGHTS.

80 A MAIN MCCB - NON ESSENTIAL FEEDER
SWITCH OFF POWER IN NIGHTS.

100 A MAIN MCCB - MAIN FEEDER
SWITCH OFF POWER IN CASE OF EMERGENCY.



THE CONTRACTOR SHOULD FOLLOW THIS PANEL SLD & GA DRAWING & MAKE THE PANEL WITH CPRI / ERDA GUIDELINES , TERMS & CONDITIONS. ALSO SUBMIT THE TEST CERTIFICATE AS PER PERFORMA GIVEN IN TENDER. INSTRUCTIONS GIVEN IN BOX MUST BE POSTED WITH PRINTED LABELS ON PANEL.

CLIENTS : - ARCH. VIRAT THAKORE, AHMEDABAD.	PROJECTTYPE: ELE. CONTROL DIAGRAM.		REV.NO.	CHECKEDBY KAMLESH CHOKSHI (B.E. ELECTRICAL)	DISHITA ELECTRICALS ELECTRICAL CONSULTANT GF, 30/B, UMA COLONY, WAGHODIA ROAD, VAIDODARA - 390019. 094260 32096(M) , 081288 74936 (M). kamleshchokshi@yahoo.com, dishitaelectricals@yahoo.com, chokshikamlesh@gmail.com
	LOCATION : - SBI GOTA BRANCH, AHMEDABAD, AAO.	DATE 13 02 2026.	REV. DATE	SCALE	