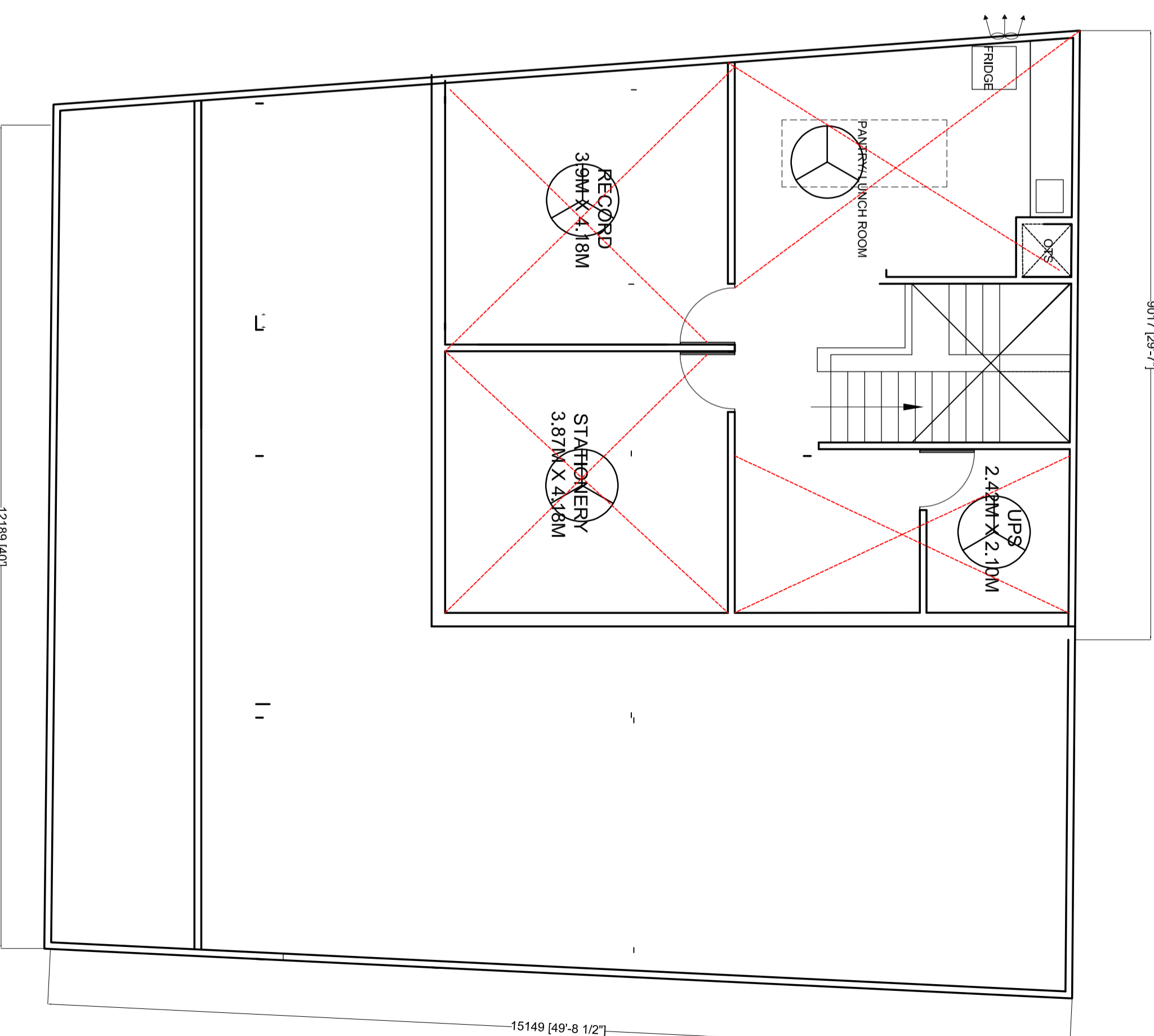


PROPOSED FALSE CEILING WITH LIGHTING LAYOUT



Legend	
Symbol	Description
	6A SOCKET WITH SWITCH
	16A SOCKET WITH SWITCH
	Single Phase Metal Clad Socket with SP MCB
	2 NO. 6/16A COMBINED SOCKET CONTROLLED BY 2 NO. 6A SWITCHES FOR UPS/FED
	CALL BELL POINT
	BELL PUSH BUTTON
	-Data Outlet (LAN) RJ 45
	-Telephone Outlet -RJ11
	-Modular type switch for AC
	15-18 W LED DOWNLIGHTER RECESSED
	2-5 W LED DOWN LIGHTER RECESSED
	2x2 LED PANEL LUMINAIRE RECESSED
	1200 MM LED TUBELIGHT
	600 MM LED TUBELIGHT
	STRIP LED CONCEALED IN COVES
	WALL FAN POINT
	CEILING FAN POINT
	EXHAUST FAN POINT
	SWITCH BOARD FOR LIGHT POINT CONTROL (WITHOUT SOCKET)
	SWITCH BOARD FOR LIGHT POINT CONTROL (WITH 6A SOCKET & SWITCH)
	DISTRIBUTION BOARD
	UPS DISTRIBUTION BOARD

Light Fittings shown with "S" shall be surface mounted,
Light fittings shown in green colour shall be Fed by UPS.

PROJECT & CLIENT
 PROPOSED INTERIOR FURNISHING FOR SHUJALPUR CITY BRANCH
 PREMISES AT SHUJALPUR (MP)
 CLIENT: SBI

SHEET SET TITLE
 PROPOSED ELECTRICAL LAYOUT PLAN

STATUS
 PROP
 GFC

DWG. NO.
 SHC/SBI/03
DATED
 06/01/2026

NORTH

DEALT SP
DRAWN RU
APPROV. SP

ARCHITECTS

 Design Avenues
 BHOPAL
 INDORE

ADDRESS
 MZ-4, SHRI LAKSHMI LEEILA TOWER, 240 SNEH NAGAR, SAFNA SANGETA ROAD, INDORE
 Mobile : 98260-74756

COPYRIGHT: This Drawing is Copyright of Design Avenues Architects and is not to be Copied without permission.