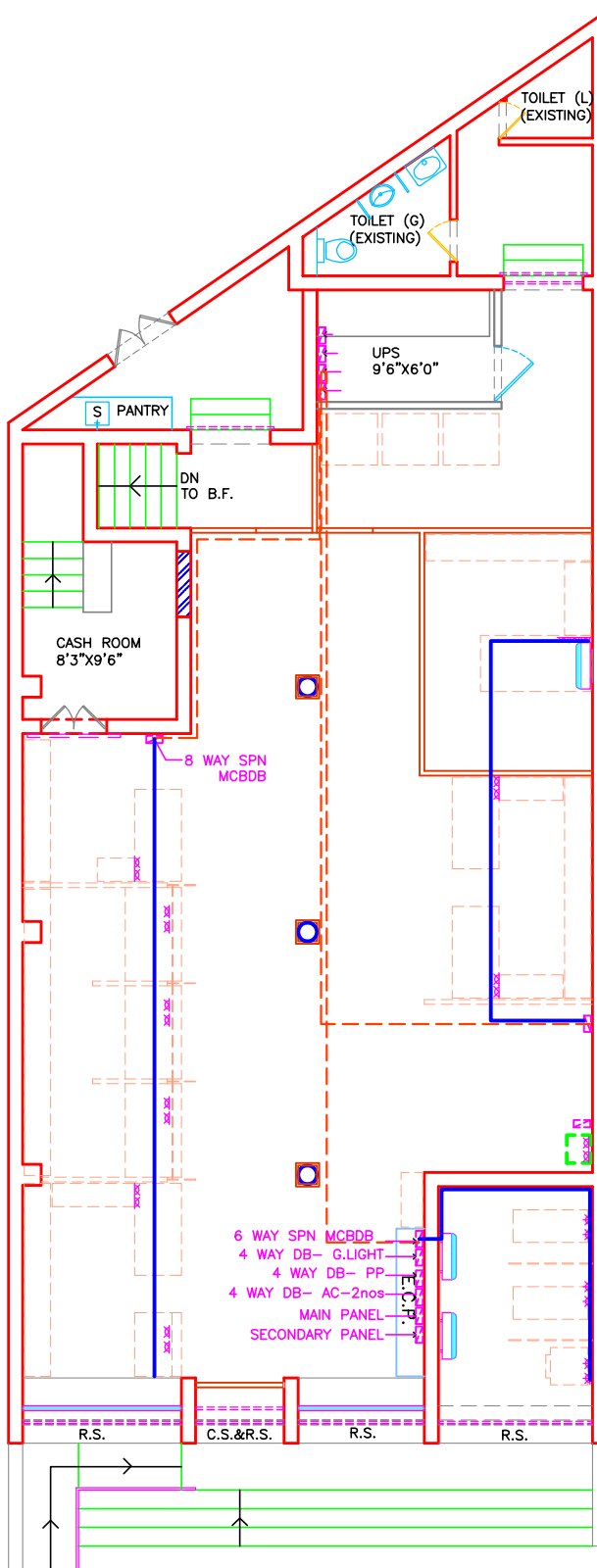


LAYOUT PLAN - B.F.



LAYOUT PLAN - G.F.

PROPOSED INTERIORS /
RENOVATION OF
STATE BANK OF INDIA, AT
B.O. MATTAUR, SECTOR -70,
MOHALI, PB.

ELECTRICAL DB'S & UPS ROUTE

LEGEND

UPS LINE / ROUTE
- 3 X 2.5 SQ.MM. PVC
INSULATED COPPER
CONDUCTOR ARMoured CABLE



3 NO. 5 AMP 3 PIN MODULAR
SOCKET CONTROLLED BY 1
NO. 5 AMP MODULAR SWITCH
WITH INDICATOR , CONNECTION
END TERMINATIONS WITH
SUITABLE SIZE OF GLANDS ETC.
COMPLETE AS REQD.
(ON UPS POWER).

NOTE - LED POINT AS PER
BM ADVICE



2 NO. 15 AMP 5 PIN
MODULAR SOCKET CONTROLLED
BY 1 NO. 15 AMP MODULAR
SWITCH WITH INDICATOR ,
CONNECTION END
TERMINATIONS WITH SUITABLE
SIZE OF GLANDS ETC.
COMPLETE AS REQD.
(ON UPS POWER).

3X6 SQ.MM. COPPER
CONDUCTOR (UPS DB'S)

REV.	DESCRIPTION	DATE
TITLE:	LAYOUT PLAN -	
	ELECTRICAL DB'S & UPS ROUTE	
SCALE	1"=8'-0"	
DATE	03/03/25	
JOB NO.	SBI-S70M/01	
DRG. NO.	WD-05	